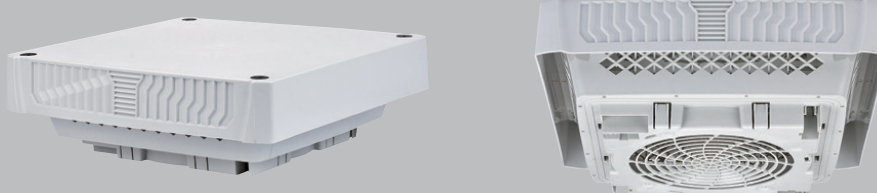




Roof Fan – ENRF6000

Enza Fan Filter are widely used in control panels, junction boxes, power distribution box, automation equipment, electronic & power device etc.



Technical Datasheet

Model	ENRF6000
Available Colors	RAL 7035
Fan Size	400 X 135 X 400 mm
Enclosure Cut-out	258 x 258 mm
Airflow Rate	860 m ³ /h (1200 m ³ /h)
Rated Current (A)	0.46/0.51
Power Consumption (W)	98/118
Axial Fan	Ball Bearing & Body Aluminum alloy die casting material
Noise Level (dB)	74
Centrifugal Fan	Capacitive motor
Filter mat	G4
Filter material	New ABS material confirms to RoHS
Operating/ Storage Temperature	-25 to +65 °C
Operating / Storage humidity	Max 75% RH (non-condensing)
Protection Type	Without filter mat: IP22, With filter mat: IP55